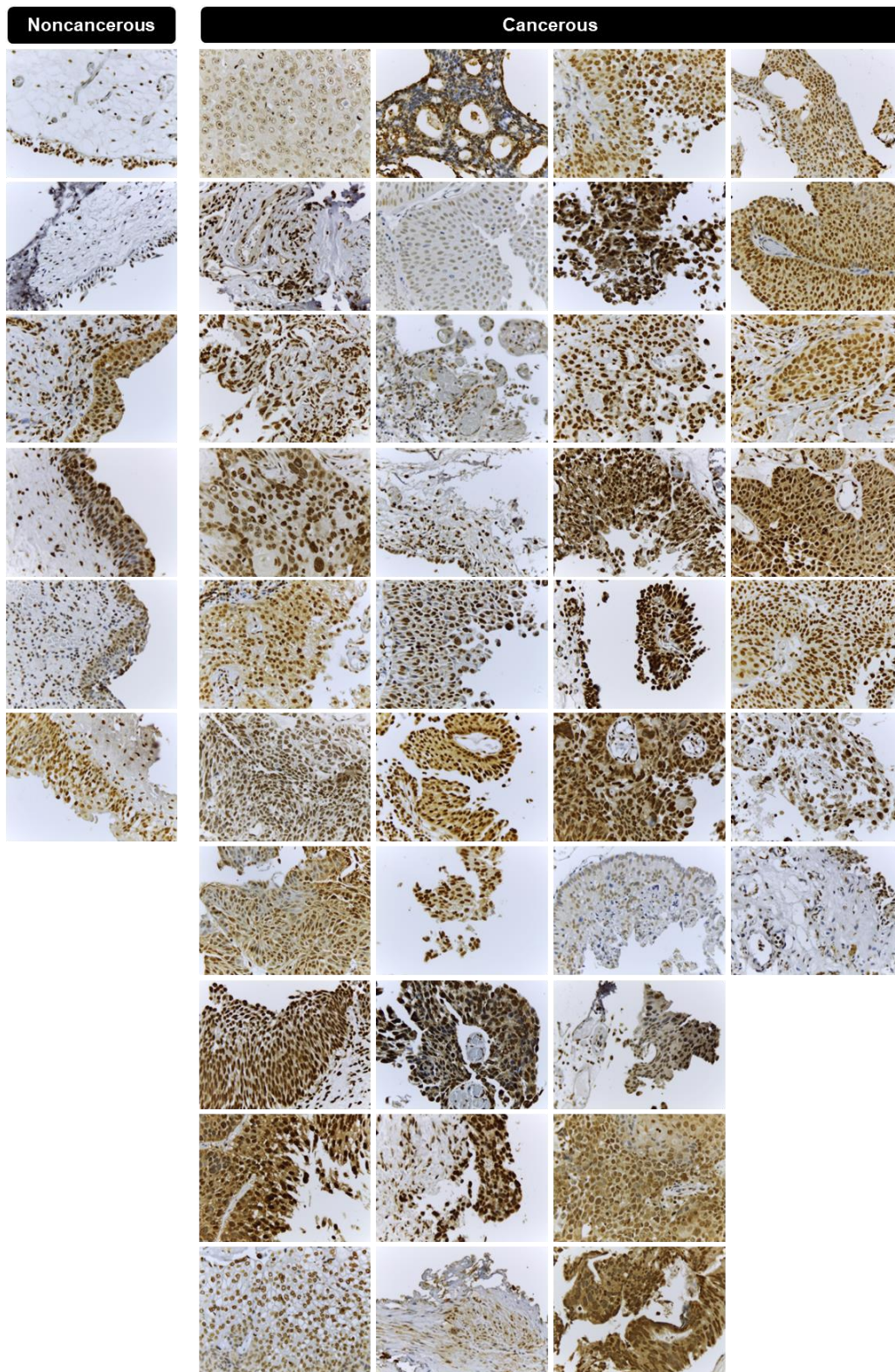
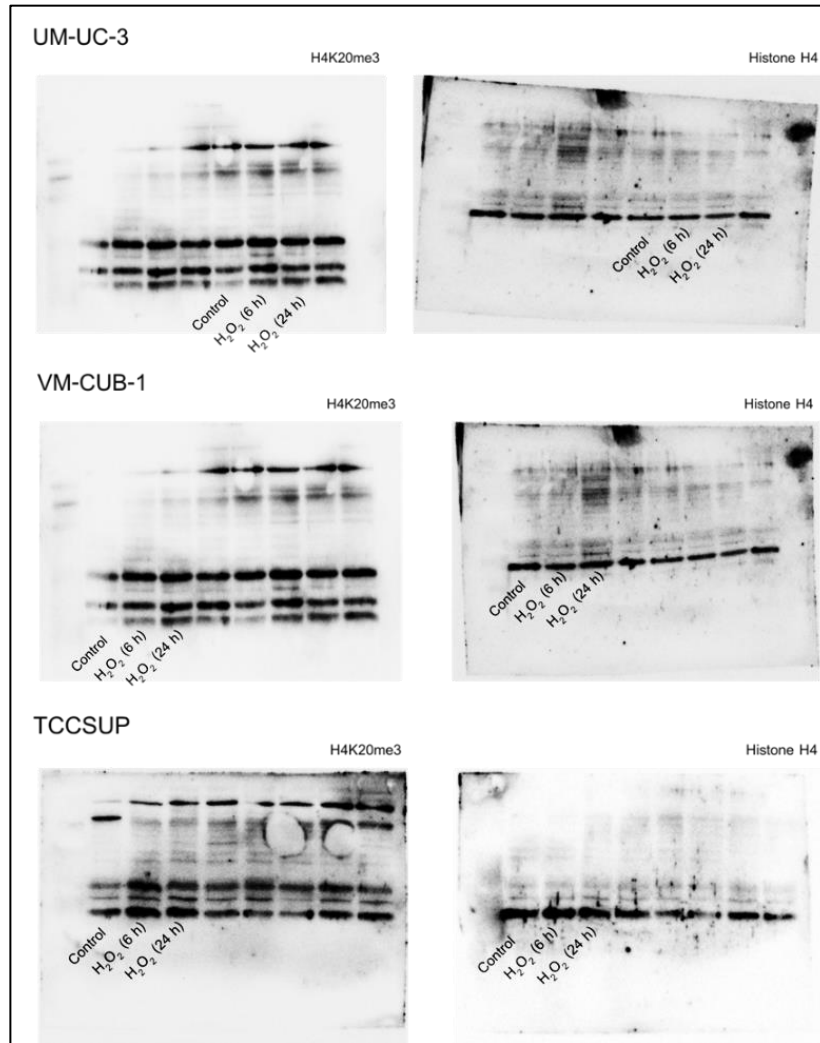


Supplementary Figure 1 Micrographs of H&E staining of all sections. Note: some BICa cases had more than one section.
Magnification: 40x.



Supplementary Figure 2. Micrographs of H4K20me3 staining of all sections comparing between cancerous and noncancerous areas. Magnification: 400x.



Supplementary Figure 3. The fully uncropped western blot gel for detection of H4K20me3 in BICa cells (UM-UC-3, VM-CUB-1 and TCCSUP) treated with H₂O₂ for 6 and 24 h. Untreated cells were used as control.